

NICHOLE VAN RAW PRESETS TUTORIAL

Congrats on purchasing my RAW presets for CS2, CS3 and Lightroom. I'm confident that my presets will deliver the results you're looking for and save you valuable time in the process. I've written this tutorial to get you started on using my presets to their fullest potential.

What follows in this tutorial is a step-by-step walk through the presets, including the following info:

- installing the presets
- troubleshooting the install
- applying and tweaking the presets

Let's get started!

INSTALLING THE PRESETS

Installing the presets is very simple. You just need to place the files you received via email into the right folder on your computer.

NOTE: Before installing the presets, make sure you have the latest version of Adobe Camera RAW installed on your computer. This is particularly critical for CS2 users. If you are running CS2, you **MUST** have ACR 3.7 installed on your computer in order for the presets to function properly. To download ACR 3.7, follow this link: <http://www.adobe.com/support/downloads/detail.jsp?ftpID=3587>

For CS2/CS3 presets, copy the .xmp FILES ONLY into the following location depending on your operating system:

- **For Windows:** C://Documents and Settings/<username>/Application Data/Adobe/Camera RAW/Settings
- **Mac Users:** /Library/Application Support/Adobe/CameraRaw/Settings

For Lightroom (all versions), copy the .lrtemplate FILES ONLY into the following location depending on your operating system:

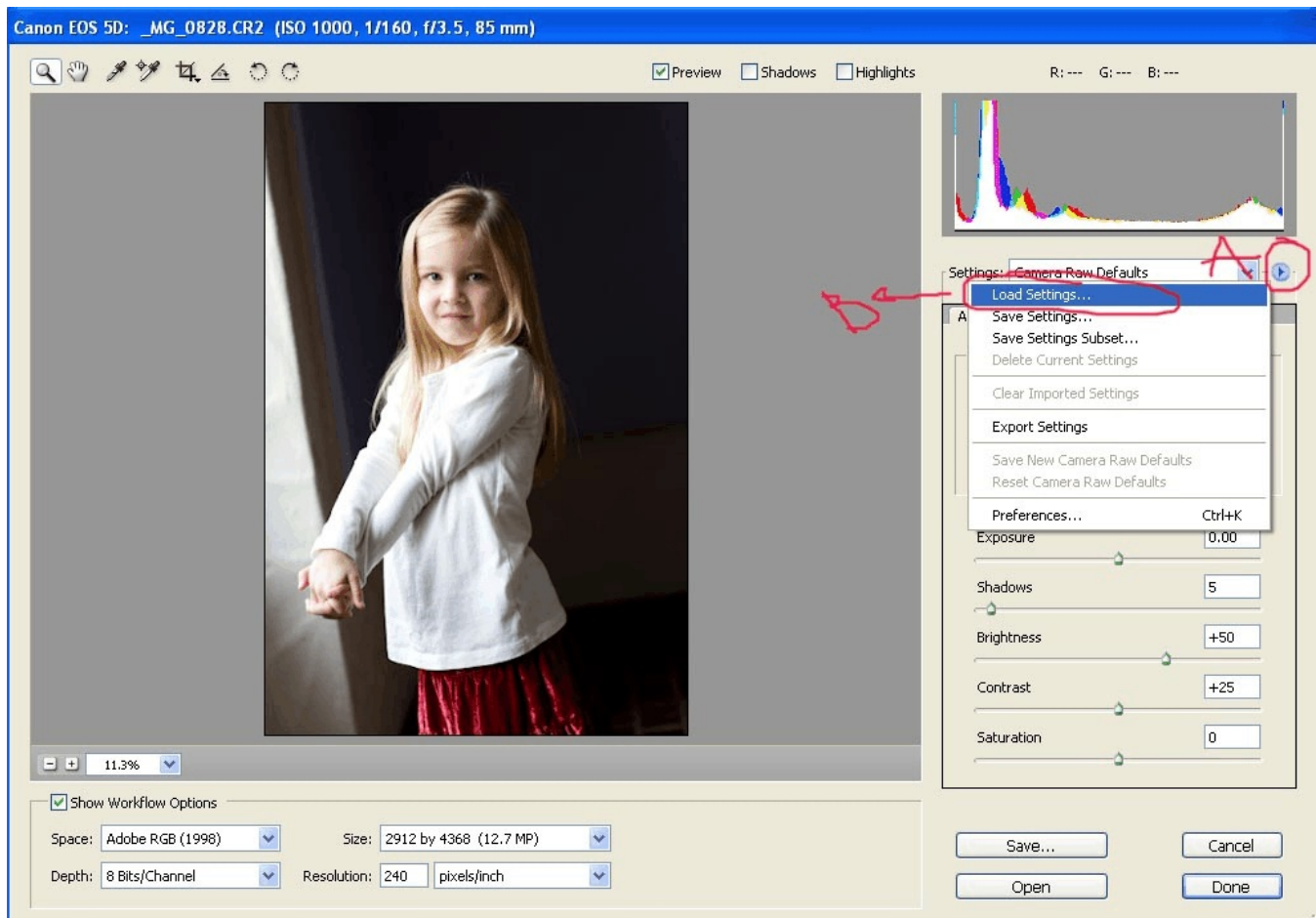
- **For Windows:** C://Documents and Settings/<username>/Application Data/Adobe/Lightroom/Develop
- **For MAC:** Library/Application Support/Adobe/Lightroom/Develop Presets/User Presets

And you're ready to start using the presets!

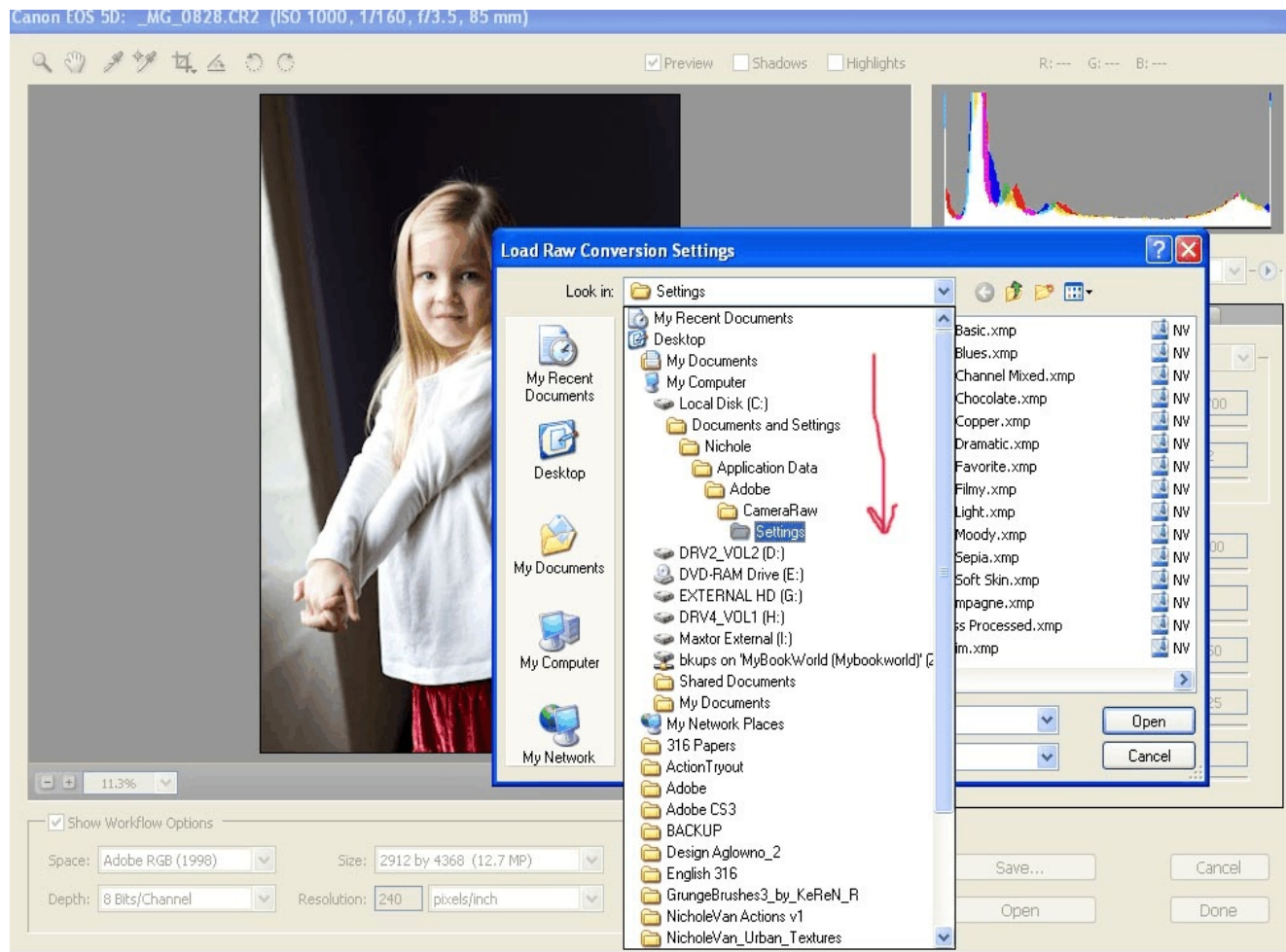
TROUBLESHOOTING THE INSTALL

For most users, the file path above is readily apparent and easy to follow to install the presets. However, some might encounter some difficulty. So here are some alternate things you can do to find the right install folder if the method described above doesn't work.

- If you do not have a "<username>" or "Application Data" folder, they may be hidden. To unhide them, in Windows Explorer (not to be confused with Internet Explorer) go to Tools->Folder Options and click on the View tab. Halfway down the list of Advanced Settings, is a folder titled "Hidden Files and Folders" Within that folder, you want to select "Show Hidden Files and Folders." This should make the necessary file path appear.
- If that doesn't work, you also retrace the path within ACR or Lightroom.
- To find the file path within **ACR**, open a file into ACR. To access the ACR menu, click on the little menu triangle (see A in figure below) and then click on "Load Settings" (see B in figure below).



- From there, a dialogue box will open, showing you where the "settings" folder that you need to place the presets into is on your harddrive (see figure below). If you click on the file path drop down menu, it will show you the entire file path. You can then just copy down that file path and retrace it in Windows Explorer.



- To retrace the path in **Adobe Lightroom**, first update to at least Lightroom 1.2 (you can update for free from Adobe's site). Then go Help→ Go to Lightroom Presets Folder. A dialogue box will open that will show you the file path.
- If none of these options work, you can also go to a command prompt (on PC) by pressing windows key + r or going Start→ Run. In the command dialogue box copy and paste this:

%appdata%/adobe/cameraraw/settings

And then click OK. That should also make the file path appear also.

APPLYING AND TWEAKING THE PRESETS

To apply a preset, either open Lightroom or Adobe Bridge or open a RAW file into ACR. You can apply presets in all three programs.

To apply a preset in Lightroom:

1. Go to the “Develop” module (see Fig. 1, A)
2. Choose a preset from the Preset drop down menu on the right (see Fig. 1, B).
3. Click on the preset to apply it to the image. If you don’t like what you see, try another preset to see the full range of what the presets offer.
4. When you find a preset that you feel works for the image, you can then fine tune the look of the preset with the development tools (see Fig. 1, C).

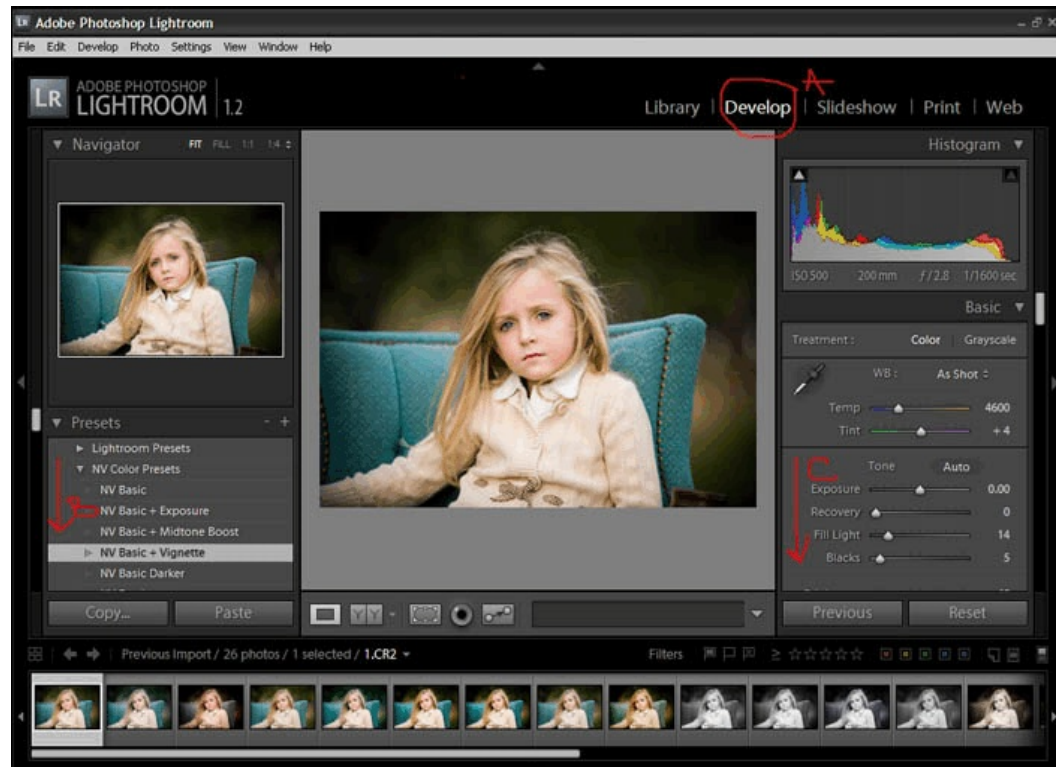


Figure 1: Applying the presets in Lightroom

To apply a preset in Adobe Bridge:

1. In Bridge, right-click on the image that you would like to apply a preset to. A menu should open up that lists all the presets (See Fig. 2)
2. From there, just click on the preset to apply it to the image (see circled area in Fig. 2). If you don’t like what you see, try another preset to see the full range of what the presets offer.
3. To do make any selective adjustments to the image, you will need to open the file into ACR.

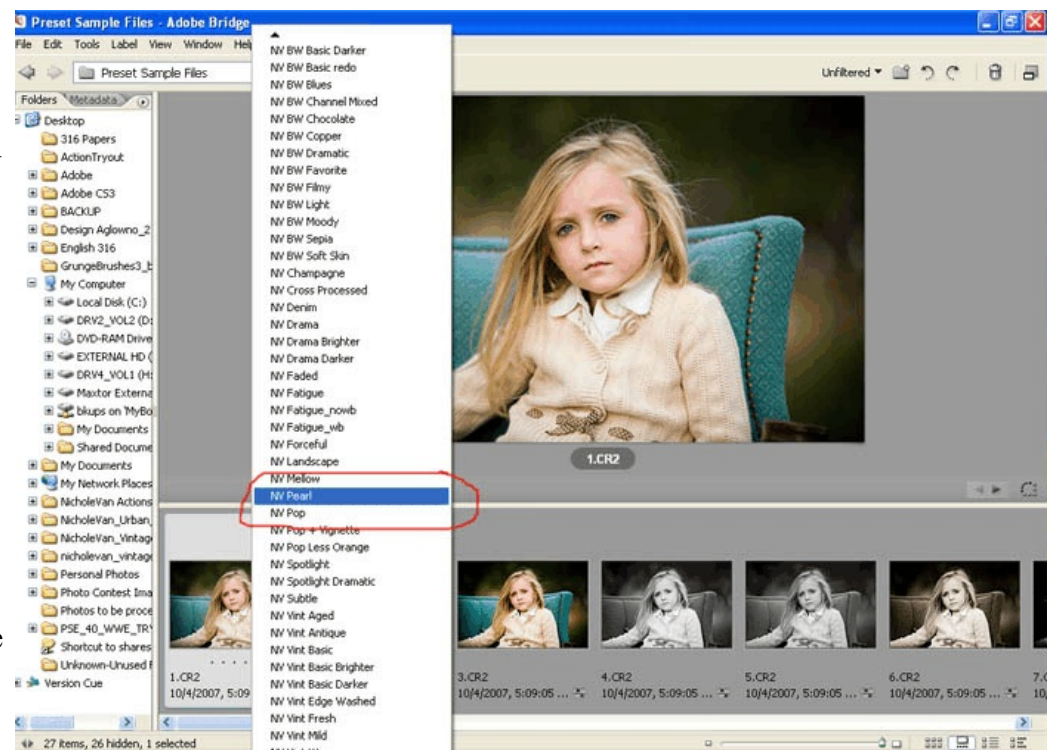


Figure 2: Applying a preset in Adobe Bridge

To apply a preset in ACR:

1. Open a RAW file into ACR.
2. Access the presets by clicking on the “Settings” drop down list.
3. Click on the preset to apply it to the image. If you don’t like what you see, try another preset to see the full range of what the presets offer (Fig. 3, A).
4. When you find a preset that you feel works for the image, you can then fine tune the look of the preset with the Adjust tools.

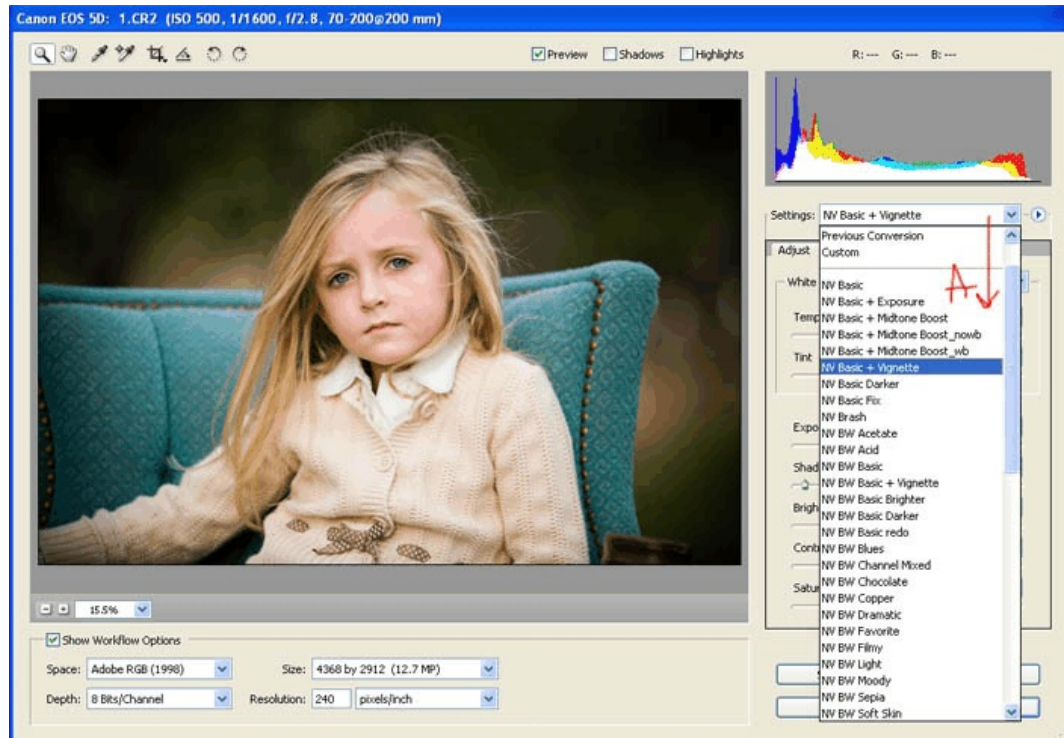


Figure 3: Applying the presets in ACR

A few notes about Exposure and Auto-toning:

- These presets assume that the exposure of your image is generally correct. Therefore, they do not push your exposure up or down too much. If your image is under or overexposed to begin with, you might need to adjust the exposure of your image AFTER applying the preset. If you adjust your exposure before applying the preset, the preset will, in most instances, reset your exposure back to 0.
- Also, if you apply auto-toning to your images upon import into Bridge or Lightroom, you might also note some problems. Auto-toning can, at times, pull the exposure of an image way down or really up depending on how over or under-exposed the image was to begin with. When you apply the preset, it will remove the effects of the auto-toning. This means that sometimes a preset may dramatically lighten or darken an image by bringing its exposure back to where it was when shot. My suggestion is to not apply auto-toning to your images to avoid this problem.

A few notes about White Balance (WB):

- In Lightroom, the presets will not change your WB. Therefore, you can automatically adjust your WB upon import and know that it will not be changed by the preset.
- In CS2 and CS3, the presets will revert your WB to “As Shot.” This means that you will most likely want to WB your images AFTER applying the preset in ACR and/or Bridge.

A Troubleshooting Note:

- If you do not have the latest version of ACR installed on your computer, the BW presets will not convert to BW properly. If you encounter this problem, please download ACR 3.7 and install it. That will fix the problem. <http://www.adobe.com/support/downloads/detail.jsp?ftpID=3587>

